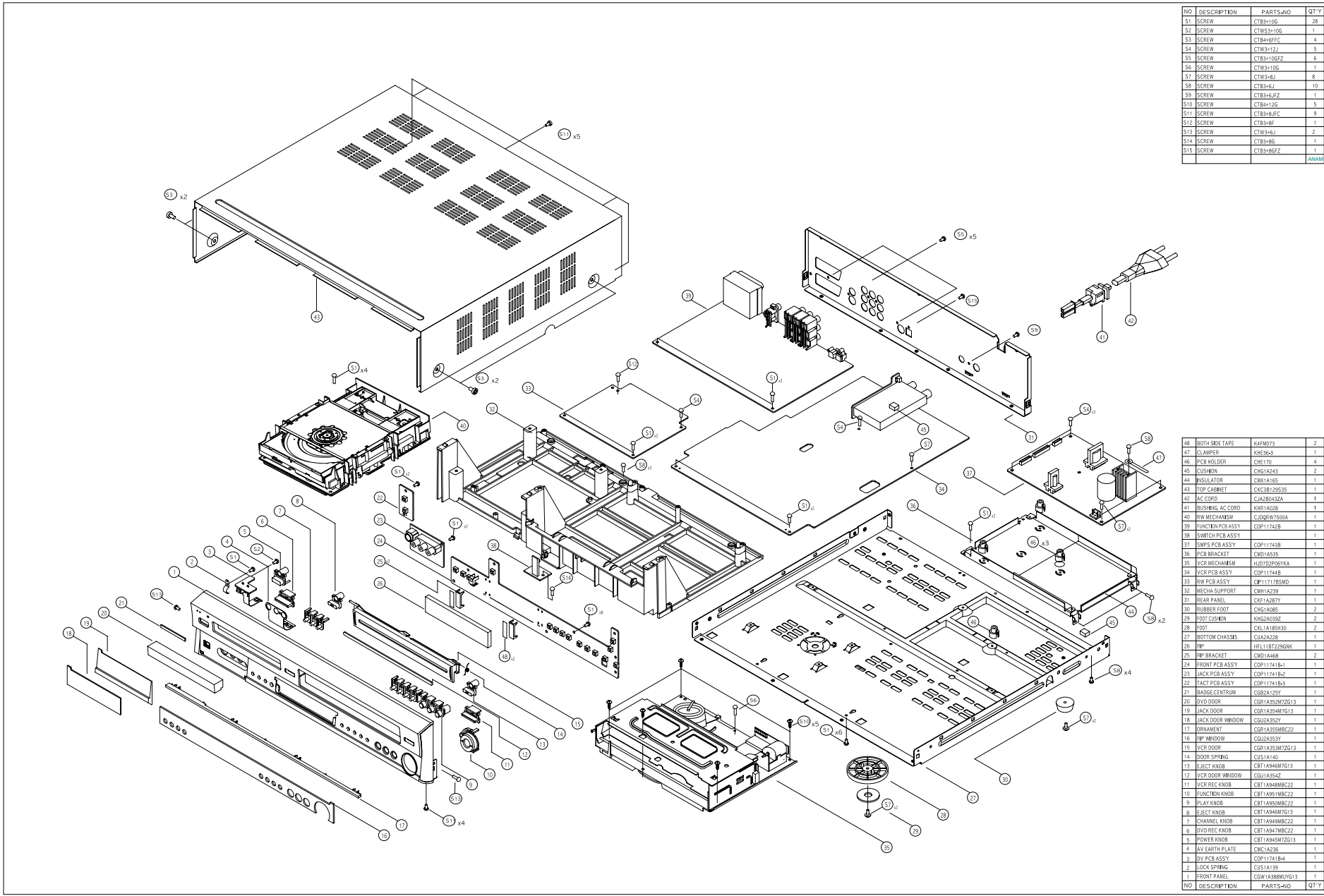


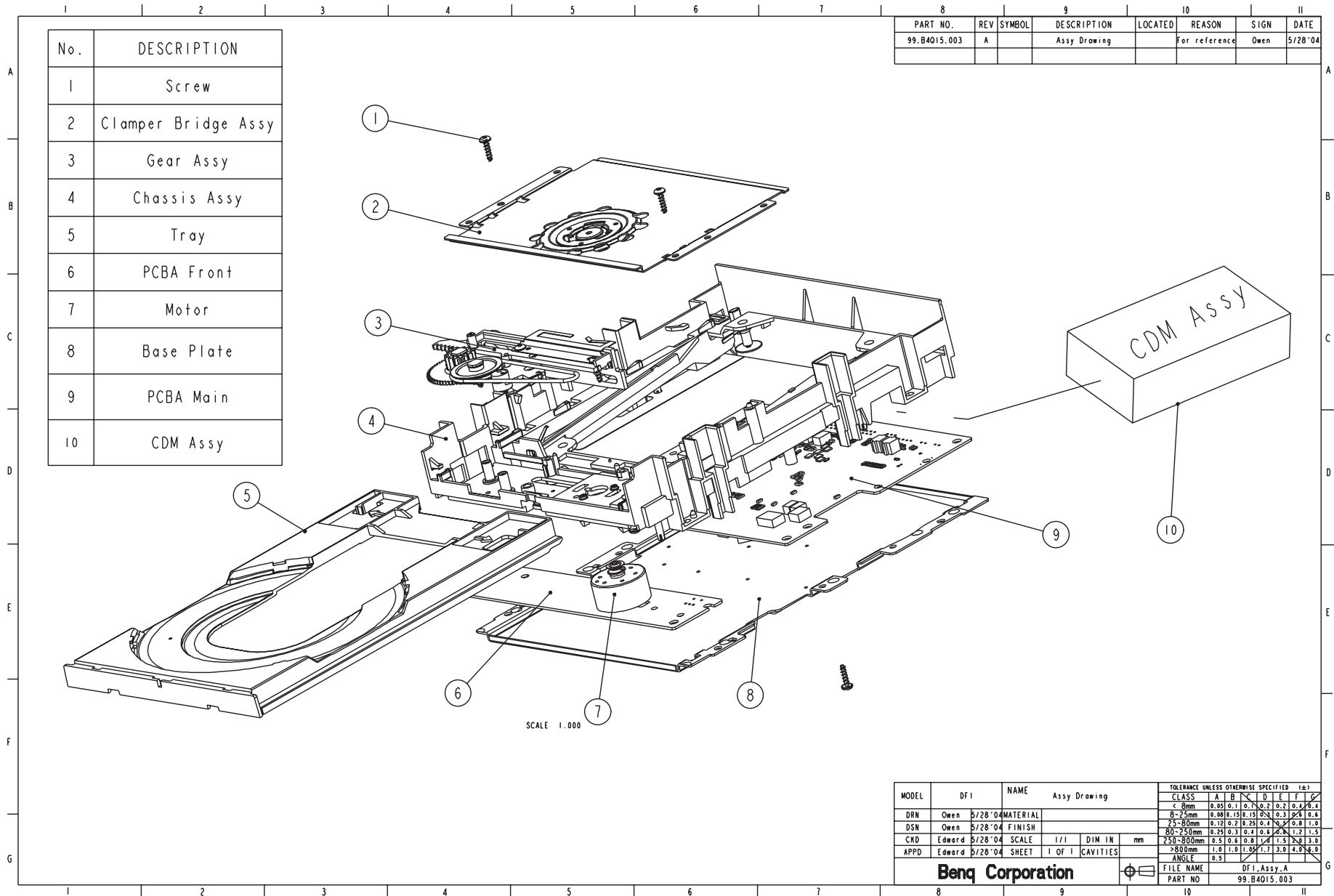
EXPLODED VIEW



NO	DESCRIPTION	PARTS-NO	QTY
51	SCREW	CTB3+10G	28
52	SCREW	CTW3+10G	1
53	SCREW	CTW4+FFC	4
54	SCREW	CTW3+12J	5
55	SCREW	CTB3+10GFZ	6
56	SCREW	CTW3+10G	1
57	SCREW	CTW3+8J	8
58	SCREW	CTB3+6J	10
59	SCREW	CTB3+6JZ	1
S10	SCREW	CTB4+2G	5
S11	SCREW	CTB3+8JFC	9
S12	SCREW	CTB3+8F	1
S13	SCREW	CTW3+6J	2
S14	SCREW	CTB3+8G	1
S15	SCREW	CTB3+8GZ	1
		ANAM	

46	BOTH SIDE TAPE	HA4M073	2
47	CLAMPER	KHE56-3	1
48	PCB HOLDER	CHET0	4
49	CUSHION	CHG1A243	2
44	INSULATOR	CMX1A165	1
43	TOP CABINET	CXC3B129535	1
42	AC CORD	CA20A932A	1
41	BUSHING AC CORD	KH1A1028	1
40	RW MECHANISM	CJQ0RW7500A	1
39	FUNCTION PCB ASSY	CDP11742B	1
38	SWITCH PCB ASSY		1
37	SUPS PCB ASSY	CDP11742B	1
36	PCB BRACKET	CDD1453B	1
35	VCR MECHANISM	HJ07D909KA	1
34	VCR PCB ASSY	CDP11744B	1
33	RW PCB ASSY	CP1171785MD	1
32	MICHA SUPPORT	CMH1A239	1
31	HEAD PANEL	JEFT1A287T	1
30	RUBBER FOOT	CHG1A095	2
29	FOOT CUSHION	KHG2A039Z	2
28	FOOT	EKL1A185B30	2
27	BOTTOM CHASSIS	CIA2A228	1
26	HP	HFL1187296NK	1
25	HP BRACKET	CMH1A465	2
24	FRONT PCB ASSY	CDP11741B-1	1
23	BACK PCB ASSY	CDP11741B-2	1
22	FACT PCB ASSY	CDP11741B-3	1
21	BAGEL CENTRUM	CG2A125Y	1
20	DVD DOOR	CGR1A352M7Z613	1
19	BACK DOOR	CGR1A348M7G513	1
18	BACK DOOR WINDOW	CGU2A355Y	1
17	ORNAMENT	CGR1A355M8C22	1
16	HP WINDOW	CGU2A353Y	1
15	VCR DOOR	CGR1A352M7Z613	1
14	DOOR SPRING	CGU2A148	1
13	ELECT KNOB	CBT1A949M7G513	1
12	VCR DOOR WINDOW	CGU1A354Z	1
11	VCR REC KNOB	CBT1A949M8C22	1
10	FUNCTION KNOB	CBT1A951M8C22	1
9	PLAY KNOB	CBT1A950M8C22	1
8	EJECT KNOB	CBT1A949M7G513	1
7	CHANNEL KNOB	CBT1A949M8C22	1
6	DVD REC KNOB	CBT1A947M8C22	1
5	POWER KNOB	CBT1A945M7Z613	1
4	AV EARTH PLATE	CMC1A236	1
3	DY PCB ASSY	CDP11741B-4	1
2	DOOR SPRING	CUS1A119	1
1	FRONT PANEL	CGW1A388M0G13	1
NO	DESCRIPTION	PARTS-NO	QTY

HJDQRW7500(DVD RW MECHANISM) EXPLODED VIEW



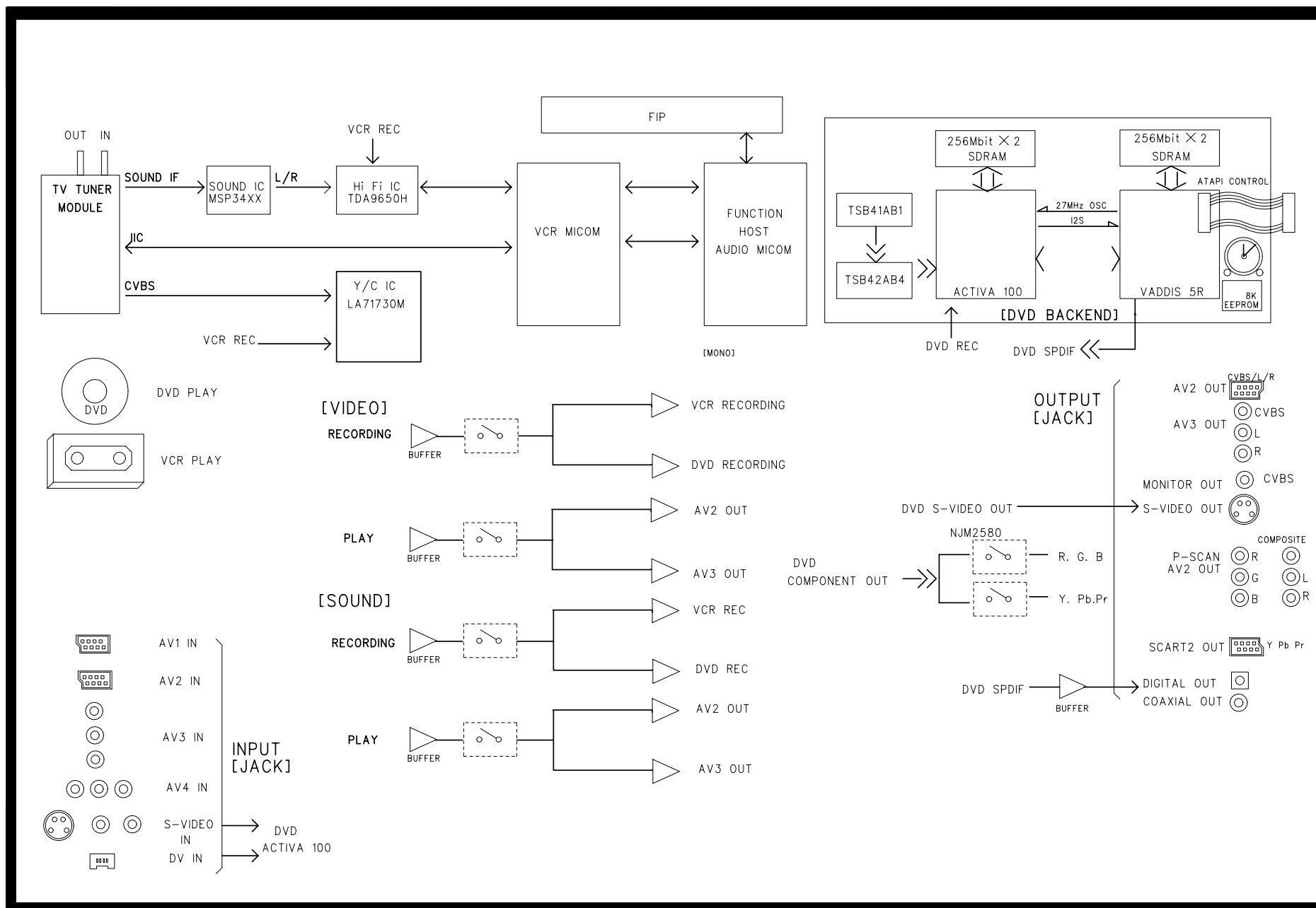
No.	DESCRIPTION
1	Screw
2	Clamper Bridge Assy
3	Gear Assy
4	Chassis Assy
5	Tray
6	PCBA Front
7	Motor
8	Base Plate
9	PCBA Main
10	CDM Assy

PART NO.	REV	SYMBOL	DESCRIPTION	LOCATED	REASON	SIGN	DATE
99.B4015.003	A		Assy Drawing		For reference	Owen	5/28/04

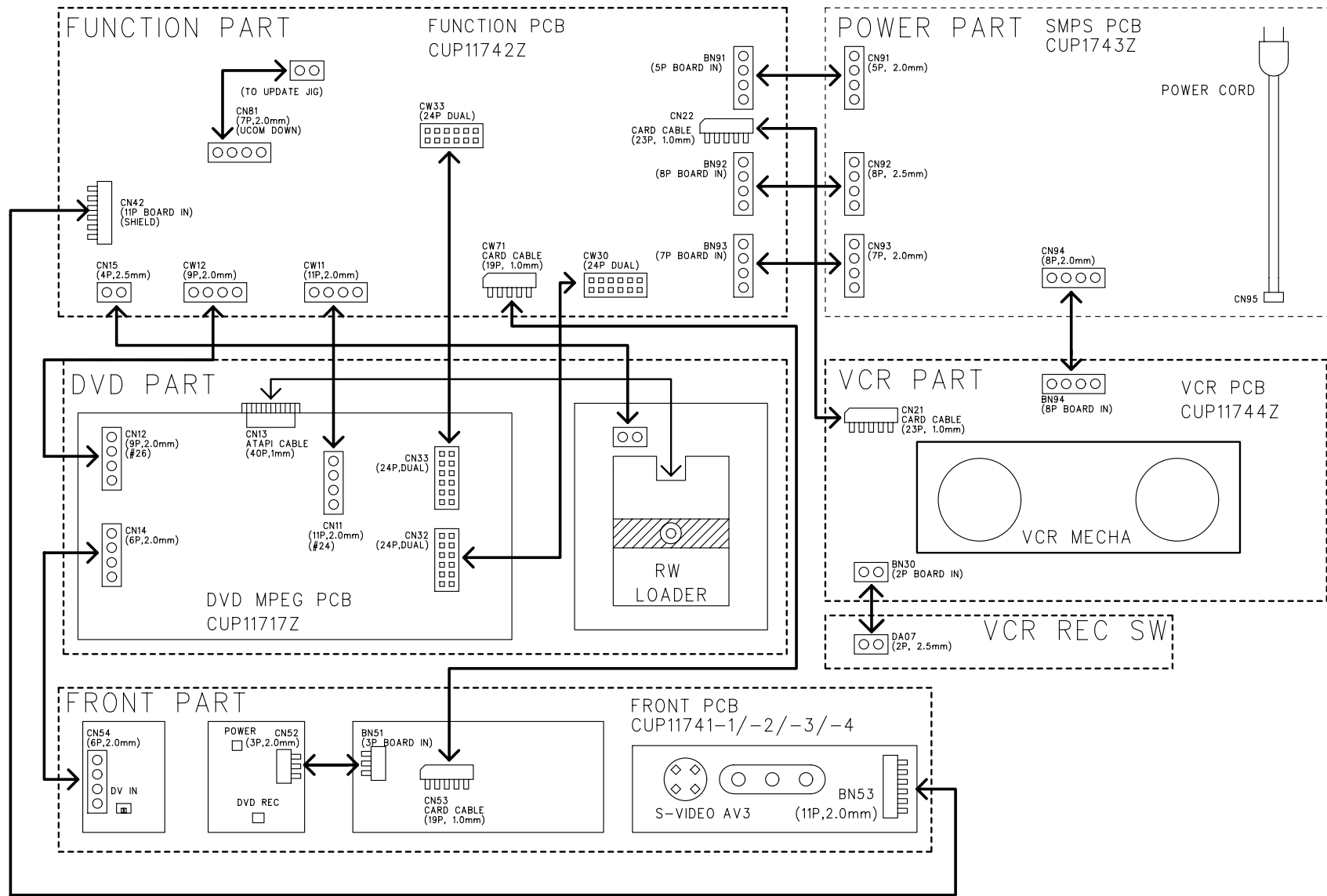
MODEL	DFI	NAME	Assy Drawing	TOLERANCE UNLESS OTHERWISE SPECIFIED (±)										
				CLASS	A	B	C	D	E	F	G			
DRN	Owen	5/28/04	MATERIAL	< 9mm	0.05	0.1	0.15	0.2	0.3	0.4	0.5	0.6	0.8	
DSN	Owen	5/28/04	FINISH	6-25mm	0.08	0.15	0.2	0.3	0.4	0.5	0.6	0.8		
CRD	Edward	5/28/04	SCALE	75-80mm	0.12	0.2	0.25	0.4	0.5	0.6	0.8	1.0		
APPD	Edward	5/28/04	SHEET	80-250mm	0.25	0.3	0.4	0.6	0.8	1.0	1.5	2.0		
			CAVITIES	250-900mm	0.5	0.6	0.8	1.0	1.5	2.0	3.0	4.0		
			ANGLE	>800mm	1.0	1.0	1.05	1.7	3.0	4.0	6.0			
			FILE NAME	DFI_Assy_A										
			PART NO	99.B4015.003										

Benq Corporation

BLOCK DIAGRAM

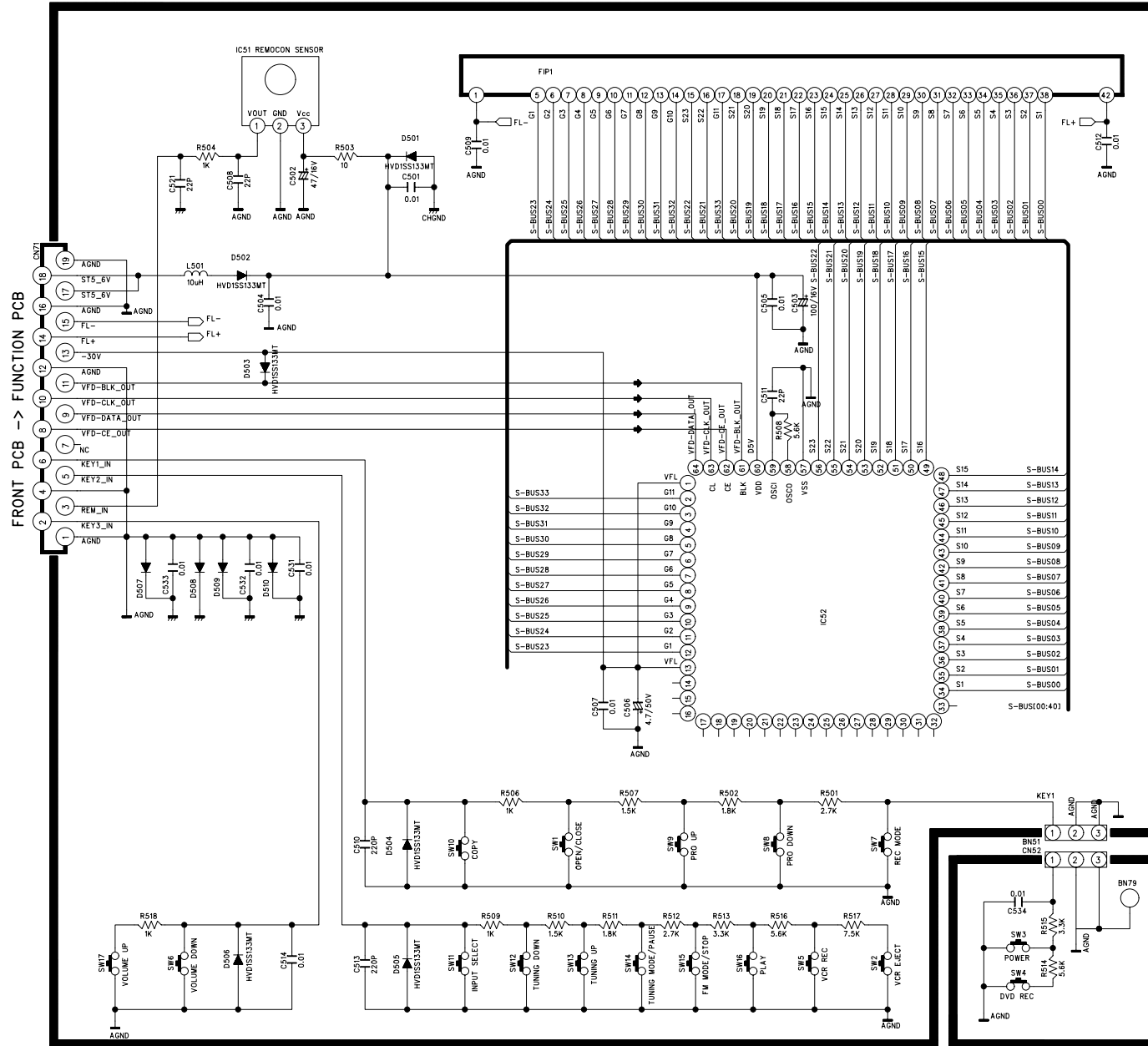


WIRING SCHEMATIC DIAGRAM

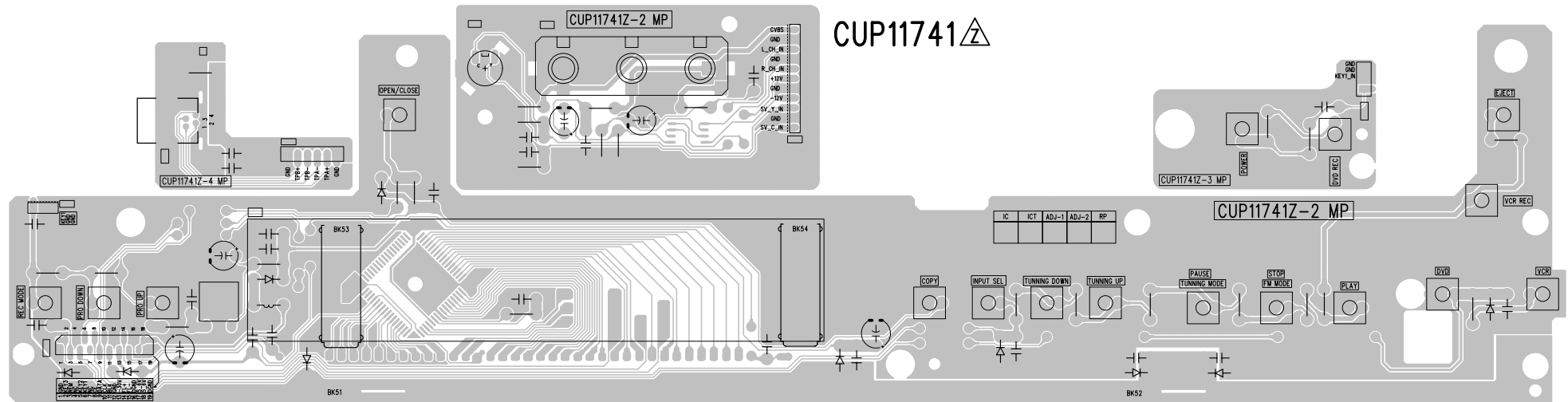


SCHEMATIC DIAGRAMS

FRONT BOARD



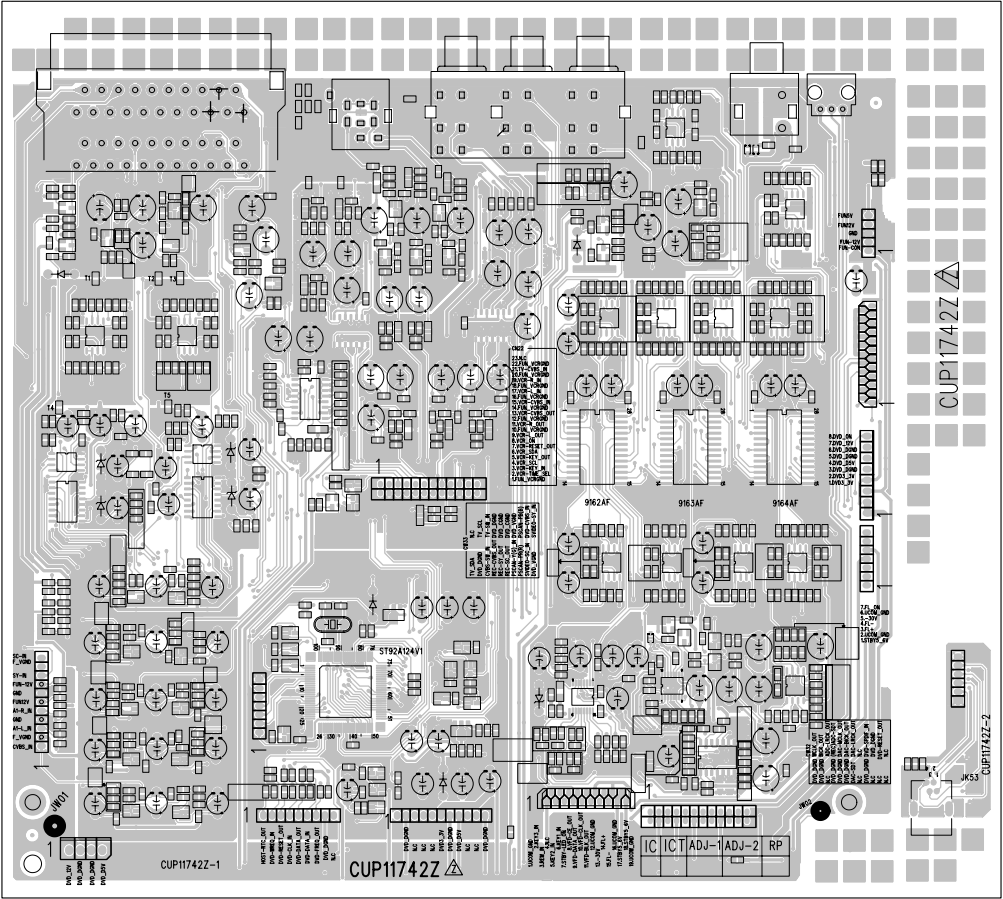
PRINTED CIRCUIT BOARDS FRONT BOARD



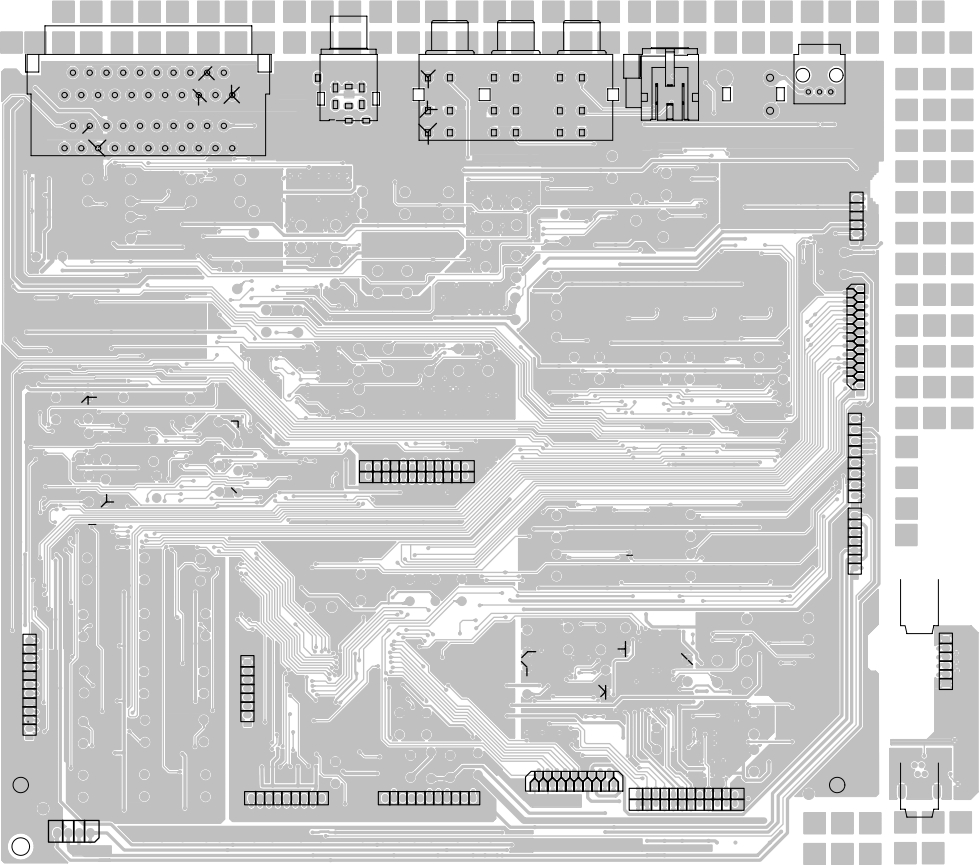
CUP11741

FUNCTION BOARD

TOP VIEW

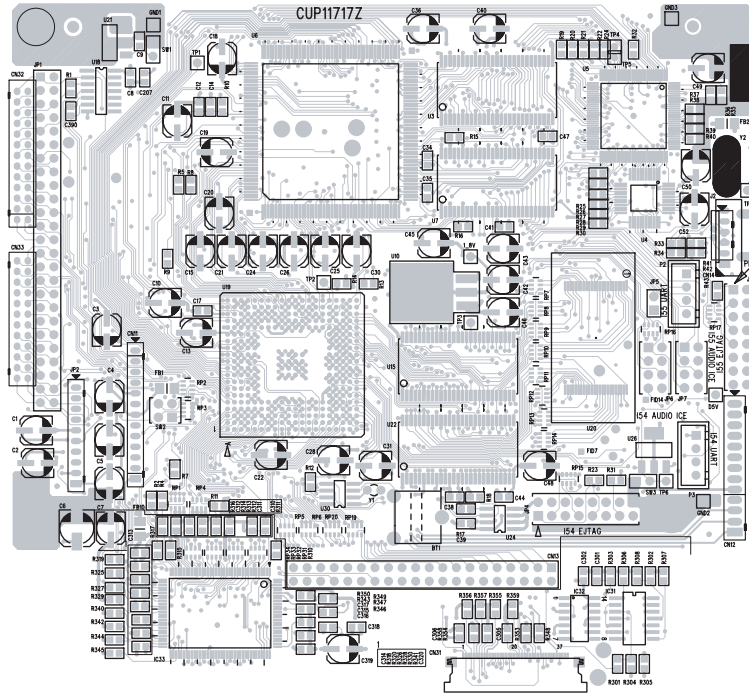


BOTTOM VIEW

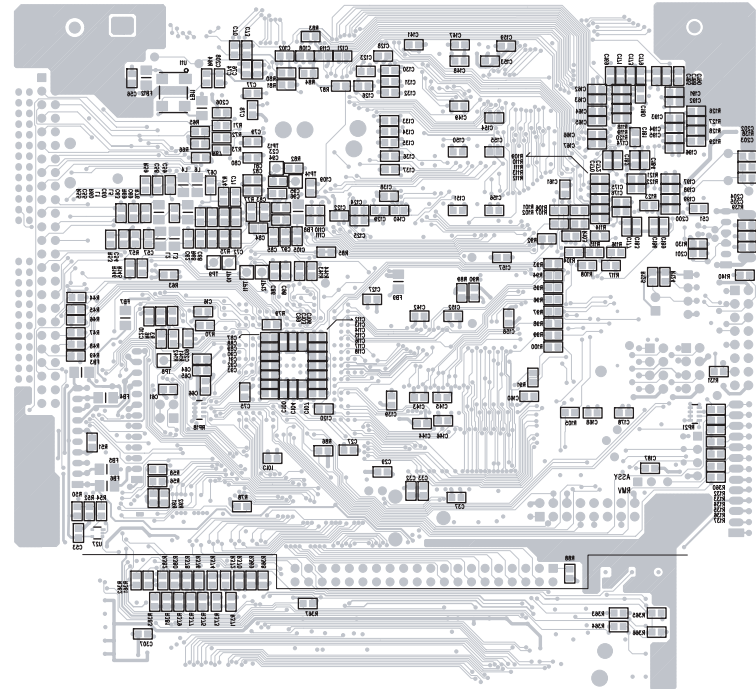


RW MAIN BOARD

TOP VIEW



BOTTOM VIEW



VCR MAIN BOARD

